

# Benchmark Report

March 31, 2025

This Benchmark Report has been provided for the sole purpose of comparing the fund/scheme's performance with Crisil AIF Benchmarks for launch of new fund and reporting to the existing investors.

## Benchmark Report

### Category-III

### Marcellus Rising Giants Fund

#### Trailing returns

Index	1-year (%)	2-year (%)	3-year (%)
Scheme (INR)	13.59	15.00	2.99
Crisil AIF Index – Cat III (INR)	9.86	20.00	12.25
Scheme (USD)	10.66	12.72	-1.08
Crisil AIF Index – Cat III (USD)	7.03	17.62	7.81

Values as on March 31, 2025

Schemes that have completed at least one year since their first close as on March 31, 2025, have been considered for the benchmark. In all, 362 schemes have been considered for the above analysis

Returns refer to post-expense, pre-carry, pre-tax values. Returns for more than one year are annualised

Category III includes funds under sub-categories Long-only Equity, Long-short Equity, Hybrid Funds and any other strategies registered under Category III of SEBI (AIF) Regulations, 2012

#### Rolling returns

Date	3-year annualised rolling returns (quarterly shift)			
	Scheme (INR) (%)	Crisil AIF Index – Cat III (INR) (%)	Scheme (USD) (%)	Crisil AIF Index – Cat III (USD) (%)
Sep 30, 2024	4.42	14.75	0.30	10.22
Dec 31, 2024	1.39	14.77	-3.29	9.48
Mar 31, 2025	2.99	12.25	-1.08	7.81
<b>Average</b>	<b>2.93</b>	<b>13.92</b>	<b>-1.36</b>	<b>9.17</b>

#### Calendar Year returns

Index	CYTD^	CY24	CY23	CY22
Scheme (INR)	-6.55	10.01	18.22	-19.87
Crisil AIF Index – Cat III (INR)	-8.76	24.24	23.00	-1.03
Scheme (USD)	-6.50	6.79	17.75	-28.08
Crisil AIF Index – Cat III (USD)	-8.72	20.60	22.52	-11.17

^till March 2025. Returns for more than one year are annualised

### Quartile analysis (INR)

Period	No. of schemes	Scheme returns (%)	Scheme quartile	Trailing returns (%)		
				1st Quartile (Threshold for top 25%)	Median	3rd Quartile (Threshold for top 75%)
1-year (%)	231	13.59	Second Quartile	13.64	7.55	3.04
2-year (%)	173	15.00	Third Quartile	28.62	21.91	14.89
3-year (%)	113	2.99	Bottom Quartile	17.66	13.13	7.50

### Quartile analysis (USD)

Period	No. of schemes	Scheme returns (%)	Scheme quartile	Trailing returns (%)		
				1st Quartile (Threshold for top 25%)	Median	3rd Quartile (Threshold for top 75%)
1-year (%)	231	10.66	Second Quartile	10.70	4.78	0.38
2-year (%)	173	12.72	Third Quartile	26.07	19.49	12.61
3-year (%)	113	-1.08	Bottom Quartile	13.01	8.65	3.25

First and third quartiles are the return thresholds for the top 25% and 75% schemes, respectively based on the individual scheme's trailing returns for the respective time-frames. Please refer to the annexure for details

For quartile analysis, only those time-frames have been considered that have at least 8 schemes available

Returns above one year are annualised

### Sub-category:

#### 1. Long-only Equity Funds

##### Trailing returns

Index	1-year (%)	2-year (%)	3-year (%)
Scheme (INR)	13.59	15.00	2.99
Crisil AIF Index – Long-only Equity Funds (INR)	9.83	22.34	12.84
Scheme (USD)	10.66	12.72	-1.08
Crisil AIF Index - Long-only Equity Funds (USD)	7.00	19.92	8.38

Values as on March 31, 2025

Schemes that have completed at least one year since their first close as on March 31, 2025, have been considered for the benchmark. In all, 266 schemes have been considered for the above analysis

Returns refer to post-expense, pre-carry, pre-tax values. Returns for more than one year are annualised

## Rolling returns

Date	3-year annualised rolling returns (quarterly shift)			
	Scheme (INR) (%)	Crisil AIF Index – Long-only Equity Funds (INR) (%)	Scheme (USD) (%)	Crisil AIF Index – Long-only Equity Funds (USD) (%)
Sep 30, 2024	4.42	15.84	0.30	11.27
Dec 31, 2024	1.39	16.14	-3.29	10.78
Mar 31, 2025	2.99	12.84	-1.08	8.38
<b>Average</b>	<b>2.93</b>	<b>14.94</b>	<b>-1.36</b>	<b>10.14</b>

## 2. Long-only Equity Funds (Open-ended)

### Trailing returns

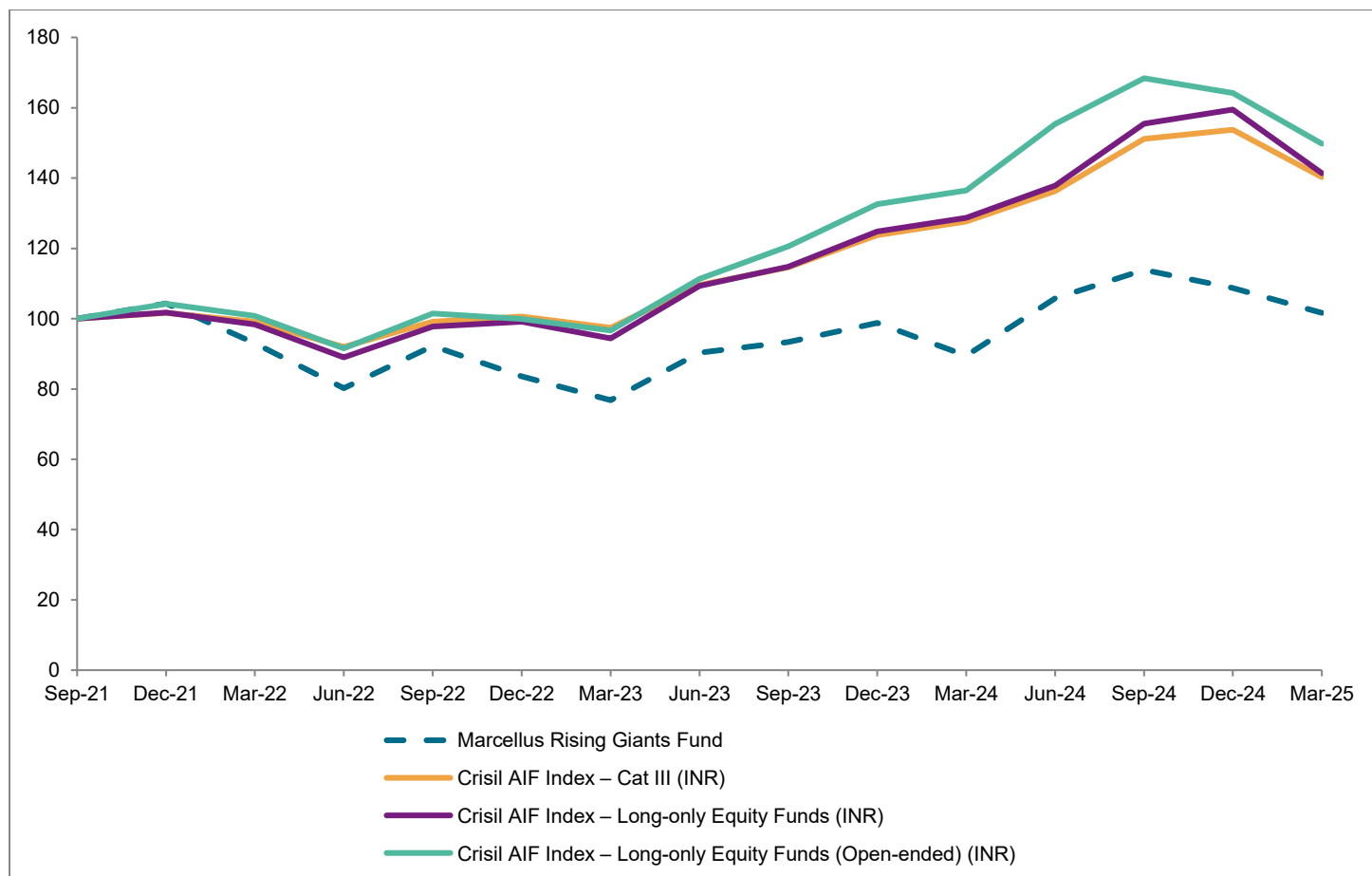
Index	1-year (%)	2-year (%)	3-year (%)
<b>Scheme (INR)</b>	13.59	15.00	2.99
<b>Crisil AIF Index – Long-only Equity Funds (open-ended) (INR)</b>	9.72	24.47	14.11
<b>Scheme (USD)</b>	10.66	12.72	-1.08
<b>Crisil AIF Index - Long-only Equity Funds (open-ended) (USD)</b>	6.89	22.00	9.59

Values as on March 31, 2025

Schemes that have completed at least one year since their first close as on March 31, 2025, have been considered for the benchmark. In all, 86 schemes have been considered for the above analysis.

Returns refer to post-expense, pre-carry, pre-tax values. Returns for more than one year are annualised

## Growth of 100



## Annexure

### Methodology, definitions, and eligibility criteria

#### Vintage year

Benchmarks for Category I and II are calculated based on their vintage years. Vintage year is defined as the financial year in which the scheme had its first close, i.e., the vintage year of a fund will be FY14 if it had its first close between April 1, 2013, and March 31, 2014.

Only those vintage years are considered that have at least three schemes available; those with less than three schemes have been excluded.

#### Calculation metrics

The benchmarks for Category I and II are based on the following metrics:

##### Pooled internal rate of return (IRR)

Pooled IRR denotes the IRR calculated at an aggregate level by pooling all the cash flows that have occurred within all the schemes belonging to the category and the vintage year. Here the cash flows are considered according to the date on which they have occurred and the valuation as on the last day is considered as the terminal value for the calculation.

##### Investment multiples and ratios

Three types of ratios are considered for calculation of benchmarks – distributions to paid-in capital (DPI), residual value to paid-in capital (RVPI) and total value to paid-in capital (TVPI). All the three are calculated for each applicable vintage year.

**DPI:** It is the ratio of the total distributions made to the paid-in capital. DPI is also called 'realisation multiple'.

**RVPI:** It is the ratio of the residual value of all investments remaining in the fund after distributions to paid-in capital. The residual value refers to the valuation of the scheme as on the date for which the benchmarks have been calculated.

**TVPI:** It is the ratio of the sum of total distributions and residual value, to the total paid-in capital. It is also called 'investment multiple'.

##### Quartile analysis

For understanding the distribution of IRR across the peer set, the returns for all the individual funds are calculated. First quartile, median and third quartile thresholds are reported. First and third quartiles are the return thresholds for the top 25% and 75% schemes, respectively, based on the individual scheme IRRs and TVPIs in each vintage year. Thus, any fund with an IRR value above first quartile threshold belongs to the top quartile, similarly a fund with IRR value between first quartile and median belongs to the second quartile, and so on. Funds with returns below the third quartile belongs to the bottom quartile.

For Category III funds, quartile analysis is based on the individual fund's trailing returns for various timeframes. Those funds have been considered that have been in existence as of March 31, 2025, and present for the whole time period.

For quartile analysis, only those vintage years have been considered where at least eight schemes are available.

##### Public market equivalent

Public market equivalent (PME+) as a metric helps in comparing the performance of an AIF against any public index. The PME+ method tries to replicate the cash flows of the AIF to a public index. The cash flows, depending on whether it is an inflow or outflow, are invested and distributed to and from the public index on the same dates as that of the AIF. The

distributions are adjusted using a scaling factor to avoid a situation where the public index is oversold and results in the negative terminal value.

### **Outlier adjustment**

Outlier adjustment has been carried out for sub-category benchmarks under category I and II whereby, those schemes that have IRR beyond a defined threshold on the higher side have been excluded from the respective benchmarks. In all 7 schemes were excluded from all sub-category benchmarks because of this outlier adjustment.

The benchmark for Category III is based on the following metric:

### **Asset-weighted index**

For Category III schemes, an asset-weighted index at the category level is created based on the quarterly returns of each scheme and the respective assets under management for those schemes.

The index is created from the quarter in which at least three schemes were available, i.e. June 2013.

### **Eligibility criteria**

- All AIFs registered with SEBI under the SEBI (Alternative Investment Funds) Regulations, 2012, are considered for the calculation of benchmarks provided they fulfil the following criteria:
  - The scheme has completed one year from its first close as on the date for which the benchmarks are calculated. For example, AIF benchmark calculated for the period ending March 31, 2025, will have funds that had their first close on or before March 31, 2024
  - Data is provided by the AIF in the required format within the specified deadline
- The following are excluded from calculation of benchmarks:
  - Angel funds registered under sub-category VCF under Category I-AIF
  - Fund of funds
  - Any scheme that has not had any transactions or investments anytime in the past
  - Any scheme that has not completed one year since its first close as on the date for which the benchmarks are calculated, i.e., March 31, 2025
  - Any scheme that has not provided complete data or that has not provided data in the required format
- Schemes are divided based on their vintage years as described in the previous section. Only those vintage years are considered that have at least three funds available. Thus, schemes that belong to vintage years in which less than three schemes were available are excluded
- For quartile analysis, only those vintage years have been considered where at least eight schemes are available

## About Crisil

Crisil Limited is a global, insights-driven analytics company. Our extraordinary domain expertise and analytical rigour help clients make mission-critical decisions with confidence.

Large and highly respected firms partner with us for the most reliable opinions on risk in India, and for uncovering powerful insights and turning risks into opportunities globally. We are integral to multiplying their opportunities and success.

Headquartered in India, Crisil is majority owned by S&P Global.

Founded in 1987 as India's first credit rating agency, our expertise today extends across businesses: Crisil Ratings & Crisil ESG Ratings (separate entities), Crisil Intelligence, Crisil Coalition Greenwich and Crisil Integral IQ.

Our globally diverse workforce operates in the Americas, Asia-Pacific, Europe, Australia and the Middle East, setting the standards by which industries are measured.

For more information, visit [www.Crisil.com](http://www.Crisil.com)

Connect with us: [LinkedIn](#) | [Twitter](#)

## About Services Provided by Crisil Limited

Our Company (hereinafter, "Crisil Intelligence", "We") is the largest valuation agency for fixed income securities, and a prominent debt and hybrid index provider in India. We publish rankings for mutual fund schemes, and provide granular portfolio analysis services for asset managers, financial intermediaries, retirement funds and institutional investors.

Our industry research and data analytics platforms provide client with insights across the Economy-Industry-Company (EIC) landscape to help assess risk and opportunities.

Our Company reports (that combine select financial and non-financial data, analytics from our proprietary risk models, and commentary on company's financial performance) are used by commercial banks, financial institutions, and non-banking finance companies as part of their credit/ risk management process.

Our SME Gradings, used by lenders, assess creditworthiness of SME enterprises relative to the peers leveraging our proprietary grading model. The framework includes assessment of entity-level financial and operating performance, as well as industry-level drivers.

Our Fixed Income Indices provide standard and customized indices that are primarily used as performance benchmarks by mutual funds, insurance companies, and other investors in Indian markets and for creation of index-linked passive products by Indian mutual funds.

Our Valuation services provide equity valuation to Alternative Investment Funds ("AIFs") and other clients for their portfolio of investments in unlisted equity.

Our Valuation services provide a basket of valuation services for multiple RBI and SEBI-regulated instruments and debt securities, including government securities, state development loans, T-bills, money market instrument, corporate bonds, and market linked debentures and is used by various institutional investors, such as mutual funds, insurers, pension funds, provident funds, banks, corporates, AIFs, and PMS, for valuation of their portfolio or calculation of net asset value.

Our Mutual Funds Ranking, ranks mutual funds across equity, debt, and hybrid categories using peer performance and portfolio data and also provides customised ranking offered to the clients, such as wealth managers, distributors and corporates.

Our AIF Benchmarking creates comparable industry performance benchmarks for various categories of AIFs, prepares Performance Benchmark Report(s) for individual AIFs, and customized reports based on requests from AIFs, using data received from AIFs.

## Disclosures

Product is Alternative Investment Fund Benchmarking. It is designed as a data analytics tool for informational purposes only and does not contain, or purport to represent any analysis, recommendation, or opinion to buy, sell, or hold any securities or provide any research analysis on any subject companies mentioned in this Product. The content in this Product is not an advertisement or endorsement or offer to sell any products of any third-party entities. This Product does not contain any price targets, earnings forecasts, or other forward-looking analysis, therefore, nothing should be interpreted as such.

It is clarified that this Product is not intended to provide a basis for any investment decisions. Nothing in this Product should be construed as an investment, legal, tax, or other advice. You agree to assume complete and full responsibility for the outcomes of all your investment decisions, including but not limited to losses, if any, that may be incurred by them. We shall not be responsible or liable for any losses, damages or other liabilities arising from of your investments in the securities markets. We advise you to consult your financial advisors or other qualified professionals before making any investment decisions.

The Product does not constitute a 'research report' as defined under the SEBI (Research Analysts) Regulations, 2014 ("RA Regulations") i.e., it does not involve any analysis, recommendation, or opinion on securities that provides a basis for an investment decision. Hence, this Product is not being provided under our research analyst license with Securities and Exchange Board of India ("SEBI"). This means that this Product is prepared independently of any research services and is not subject to regulations framed by the SEBI.

This Product is being provided in accordance with the terms of the contractual agreement between you and Crisil Intelligence and in adherence with internal quality assurance and governance policies. Kindly be advised that you may not have recourse to the regulator or access to grievance redressal mechanism(s) available under the RA Regulations, in connection with this Product.



It is clarified that you assume the entire risk of any use made of the contents of this Product. Crisil Intelligence, its directors, employees, and associates, will not be liable for any direct, indirect, special, incidental, consequential, punitive, or exemplary damages, including lost profits, arising in any way from the use of this report.

We may publish internally generated or externally sourced indicative summaries, updates, commentary, analysis and information related to various events, developments, concepts or principles in the Product. All summaries, analysis and information are subject to modification and may be updated from time to time. We reserve the right to rectify errors/discrepancies in the data and information provided in the Product, if any are observed or brought to our notice, at any point in time, without being liable for such errors/discrepancies.

Crisil Intelligence does not purport to disclose all risks and other significant issues relating to any investments. No representation is made as to the reasonableness of the assumptions made within or the accuracy or completeness of any data on past performances or historical analysis

Crisil Intelligence and its associates may have business relationships with the subject companies of the Product. Crisil Intelligence maintains and enforces internal policies and procedures to identify and manage potential conflicts of interest across all its business activities.

## Crisil Privacy Statement

Crisil Intelligence respects your privacy. We may use your contact information, such as your name, address, and email address to fulfil your request and service your account and to provide you with additional information from Crisil Intelligence. For further information on Crisil's privacy policy please visit <https://www.crisil.com/content/crisilcom/en/home/crisil-privacy-notice.html>.

## Disclaimer

Each Crisil AIF Benchmark and Crisil AIF Benchmark Report (including, for the avoidance of doubt, its values) is the sole property of Crisil. Crisil shall, at all times, exclusively own any and all intellectual property rights in the Crisil AIF Benchmarks and Report. No Crisil AIF Benchmark and/ or Crisil AIF Benchmark Report may be copied, retransmitted or redistributed in any manner except for licensed usage agreed with Crisil. While Crisil uses reasonable care in computing the Crisil AIF Benchmarks and preparing the Report and bases its calculation on data that it considers reliable, Crisil does not warrant that any Crisil AIF Benchmark and Report is error-free, complete, adequate or without faults. Crisil explicitly states that it relies on the data received from the AIFs, on an 'as is' basis to prepare the Crisil AIF Benchmarks and Report. Crisil does not conduct any independent due diligence on the authenticity or accuracy thereof and disclaims any liability in this regard. Anyone accessing and/or using any part of the Crisil AIF Benchmarks and Report does so subject to the condition that: (a) Crisil is not responsible for any errors, omissions or faults with respect to any Crisil AIF Benchmarks and Report or for the results obtained from the use of any Crisil AIF Benchmarks and Report; (b) Crisil expressly excludes all liability arising from or relating to their use of any part of Crisil AIF Benchmarks and Report.